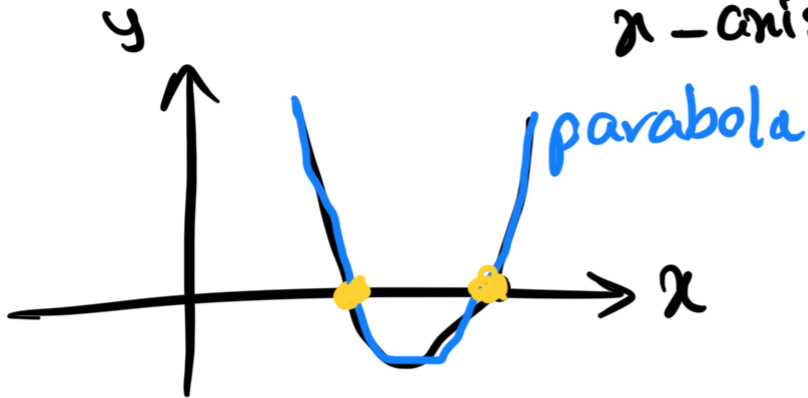


parabola $\rightarrow y = ax^2 + bx + c$ $\Delta = b^2 - 4ac$

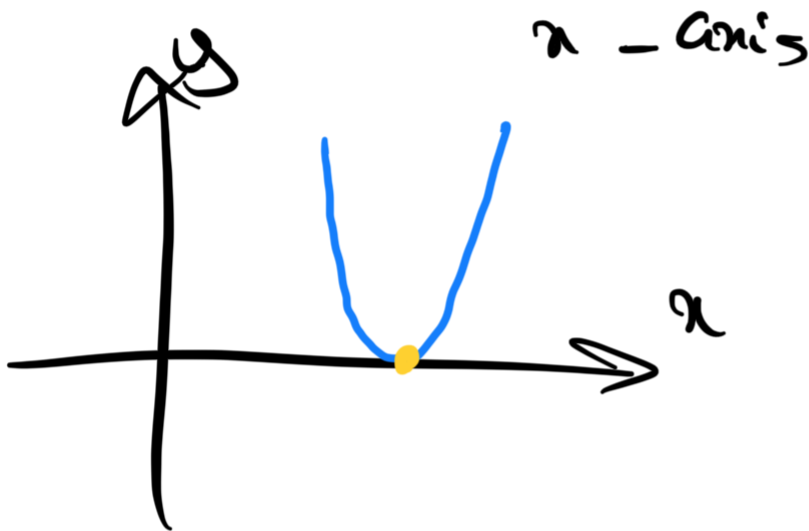
①

$\Delta > 0 \Rightarrow$ 2 cross point with
x-axis



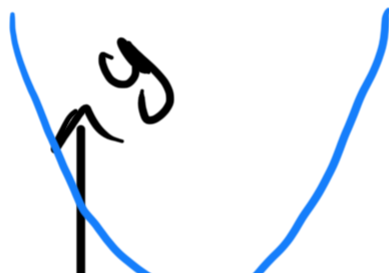
②

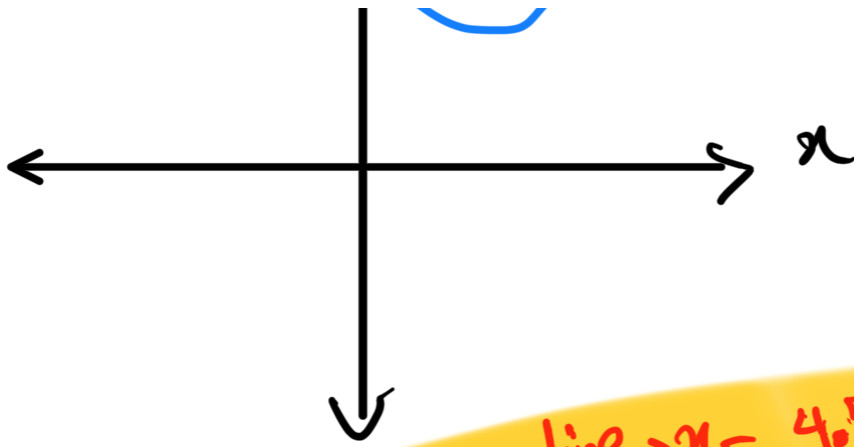
$\Delta = 0 \Rightarrow$ 1 cross point with
x-axis



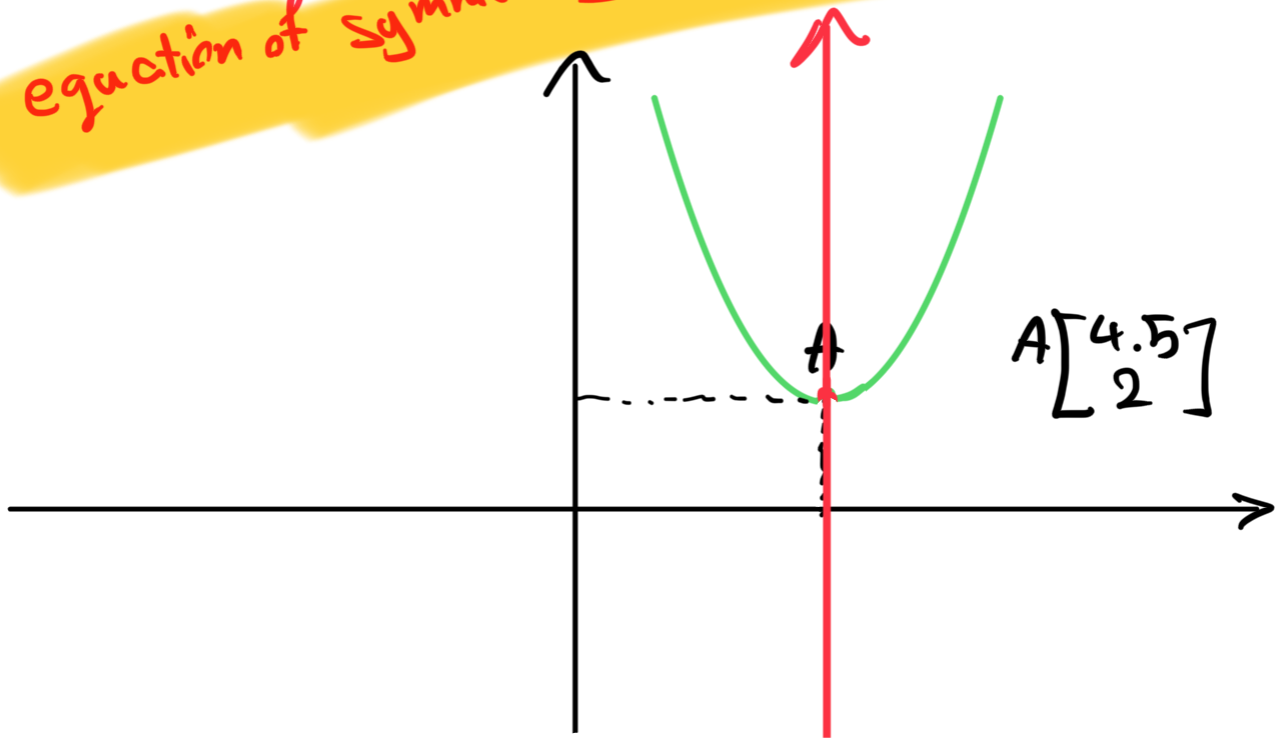
③

$\Delta < 0$





equation of symmetry line $\rightarrow x = 4.5$



equation of line which they are

parallel to y-axis is :

$x = \text{a constant number}$